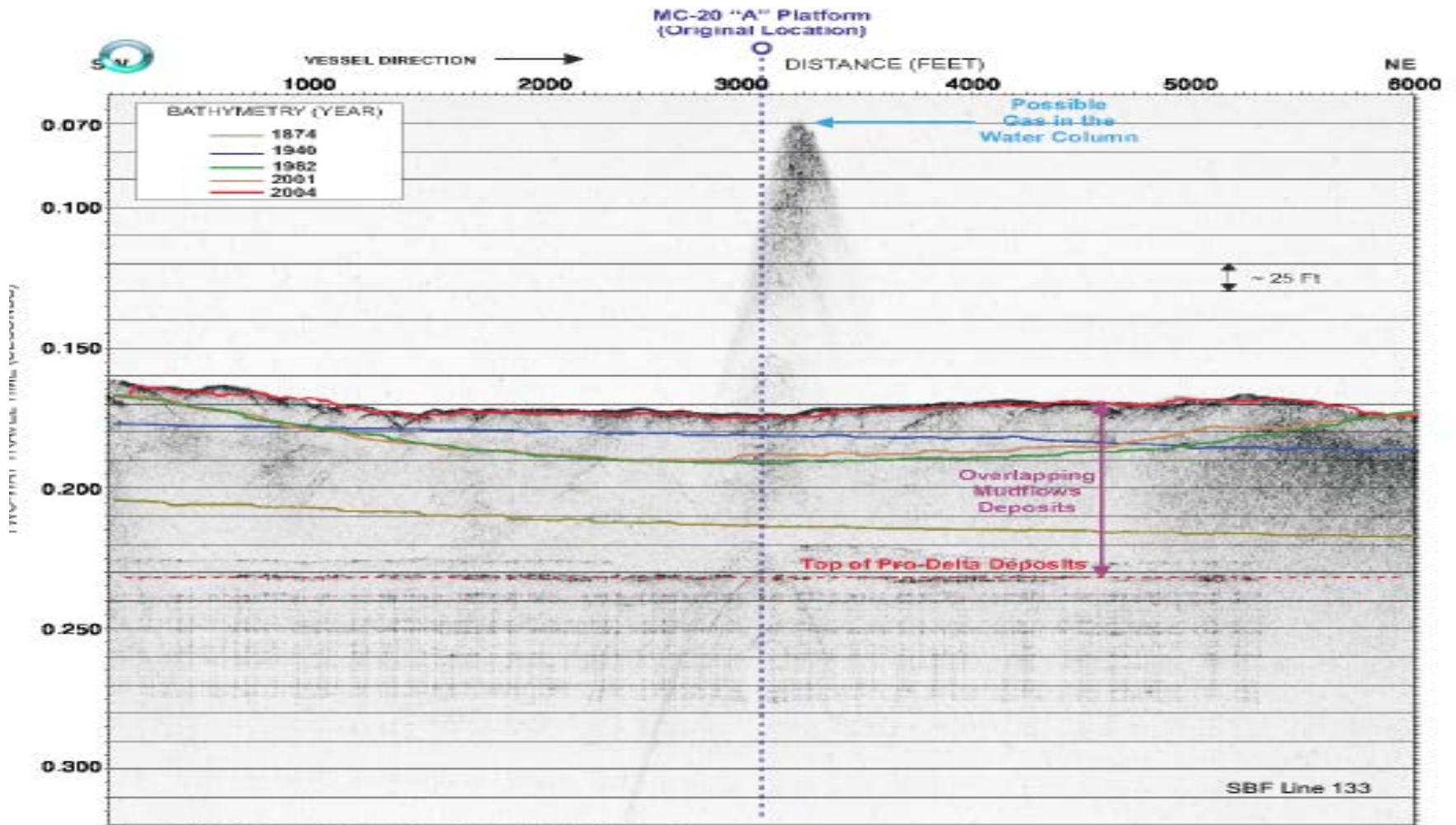


# TAYLOR ENERGY COMPANY LLC



MISSISSIPPI CANYON 20

# WATER COLUMN ANOMALY JANUARY 2005

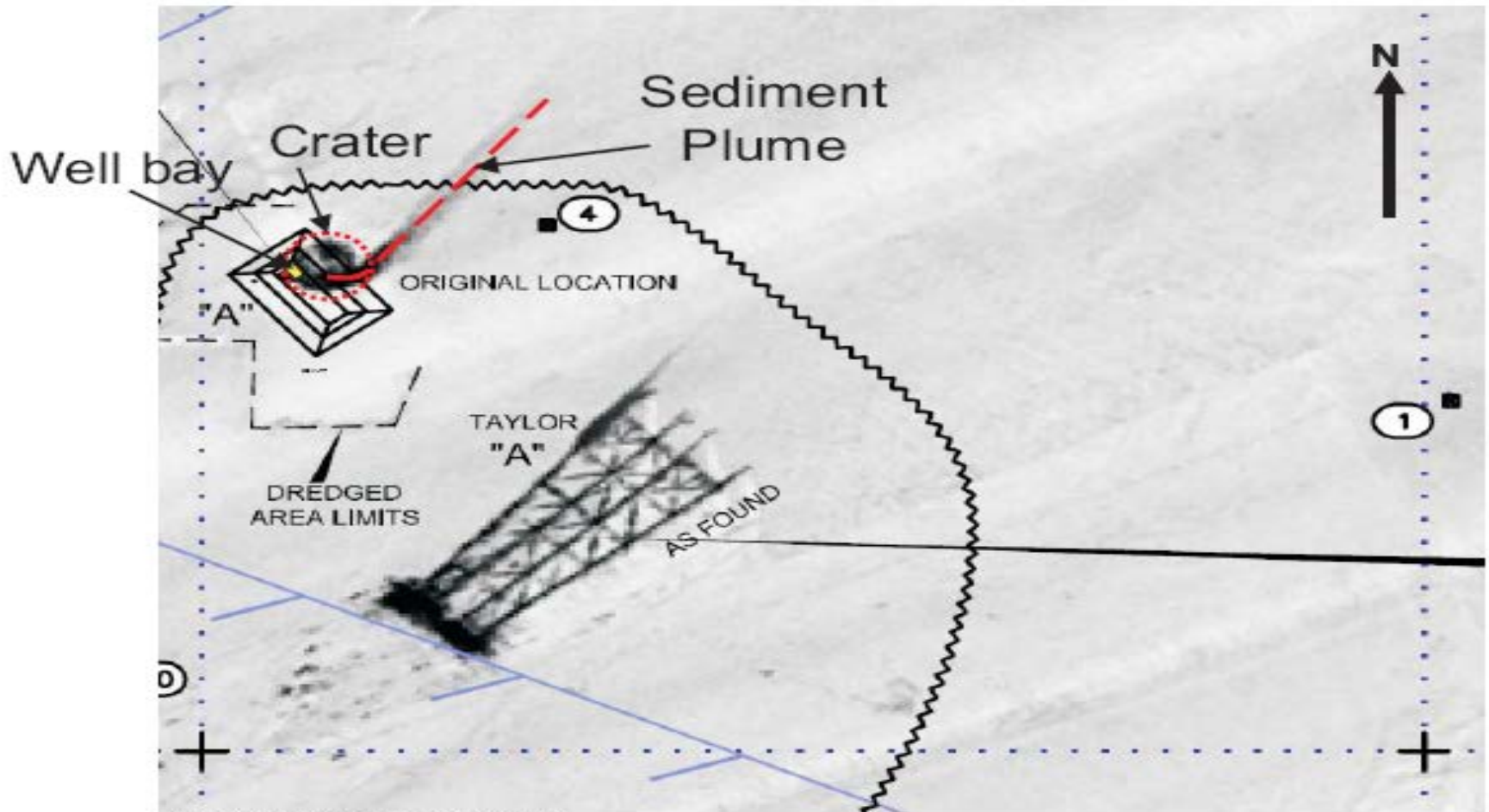


From FMMG Report No. 0201-5381-1 (FMMG, 2005a)

12.18.15

# PLUME IDENTIFICATION

## NOVEMBER, 2006

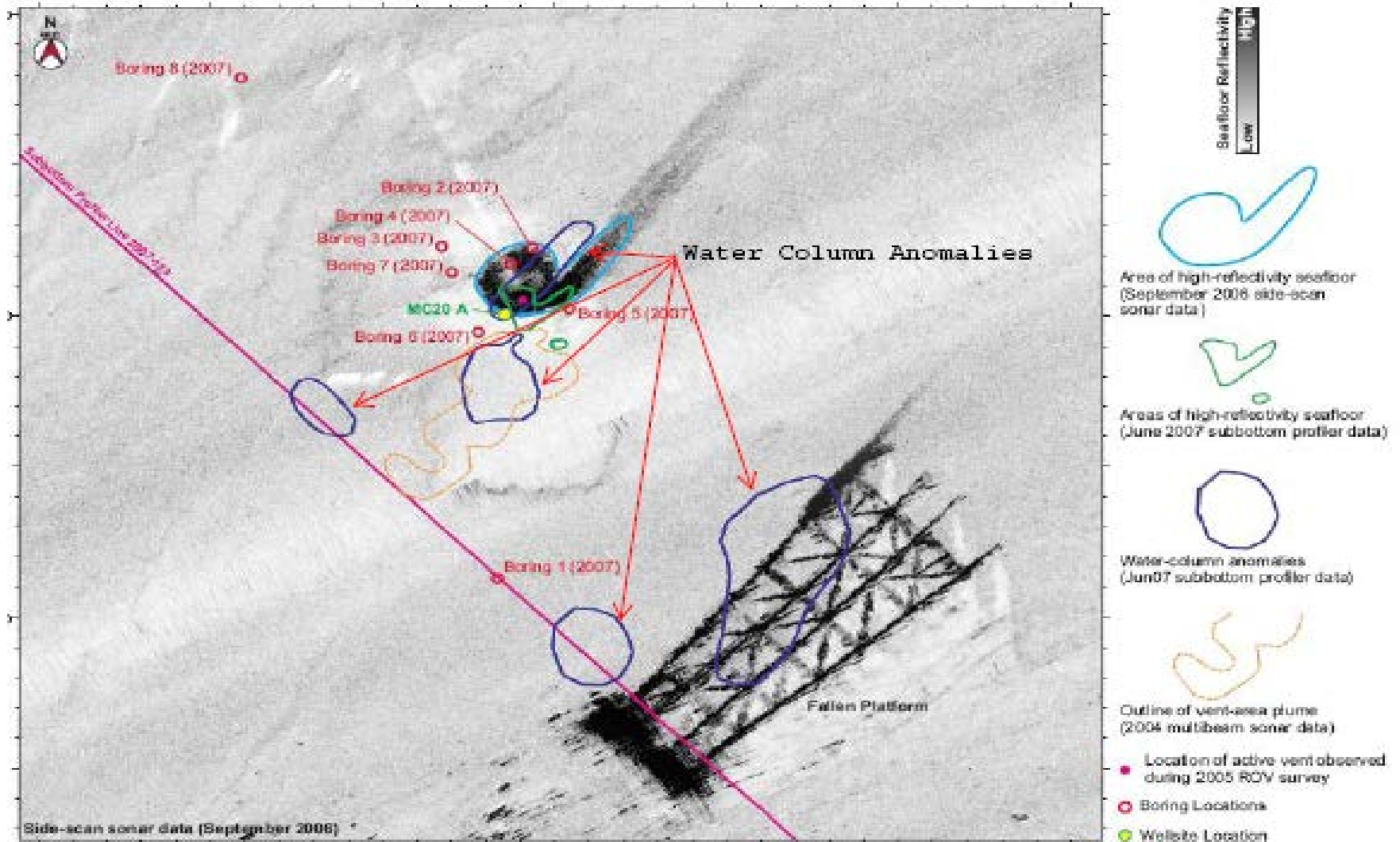


Provided by C & C Technologies (C & C, 2006)

SEDIMENT PLUME AT THE ORIGINAL CONDUCTOR WELL BAY AREA  
Block 20, Mississippi Canyon Area

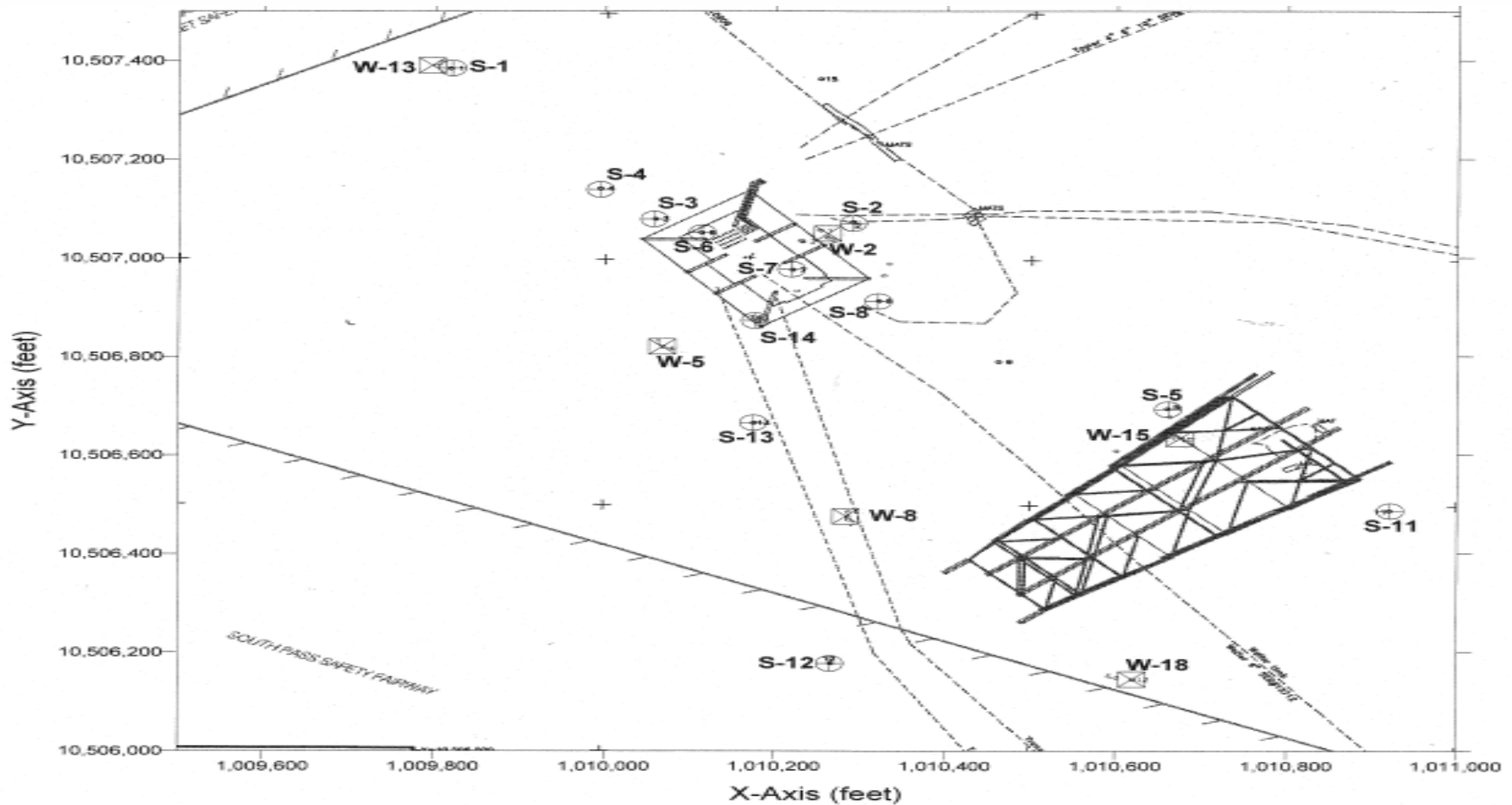
12-18-15

# SITES FOR SOIL BORING DATA



SIDE-SCAN SONAR DATA SHOWING VENT AREAS

# MC20 SEDIMENT/WATER SAMPLING

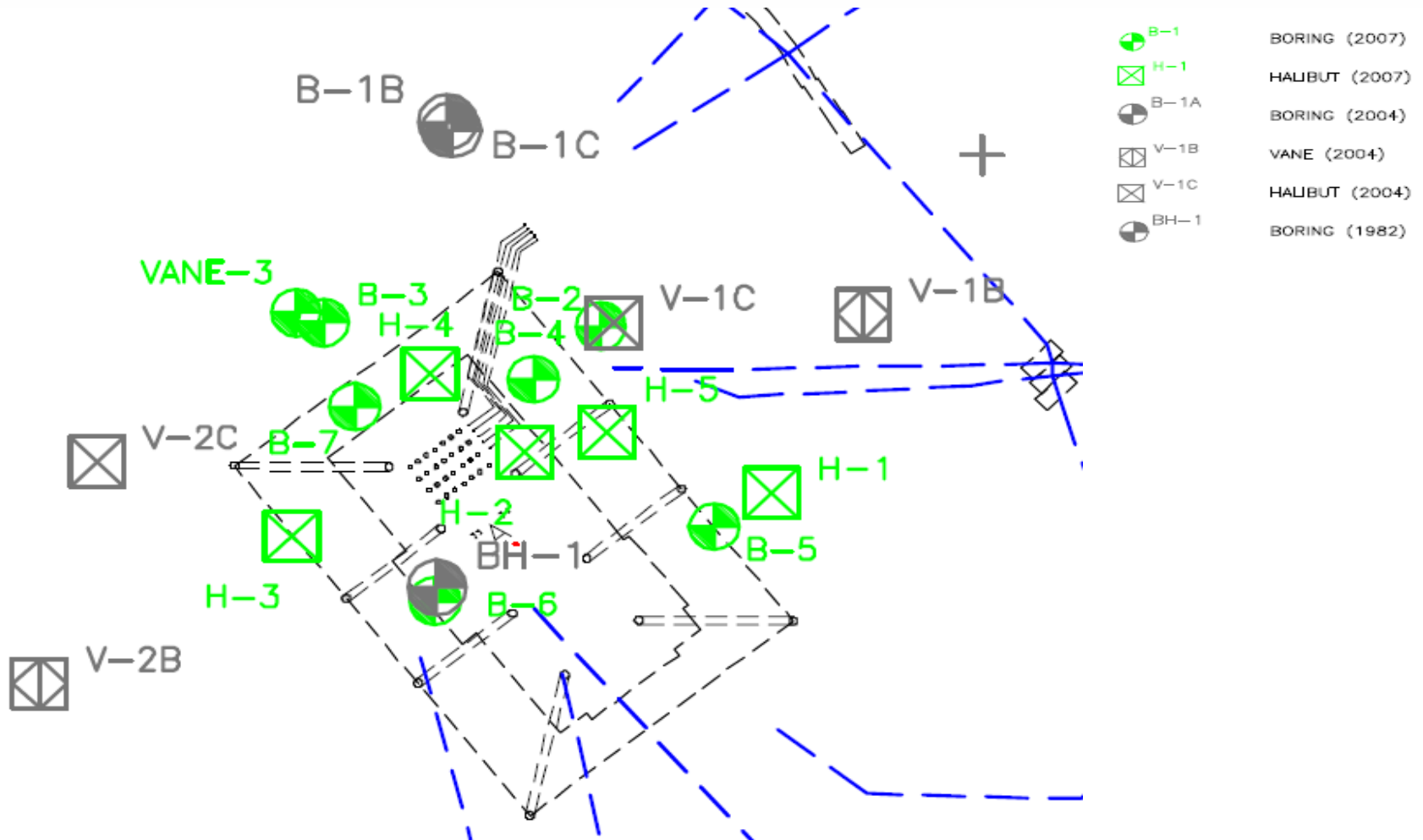


Map of Locations where Nelson collected Sediment and Water Samples

"S" sample numbers refer to sediment samples and "W" sample numbers refer to water samples.

12.18.15

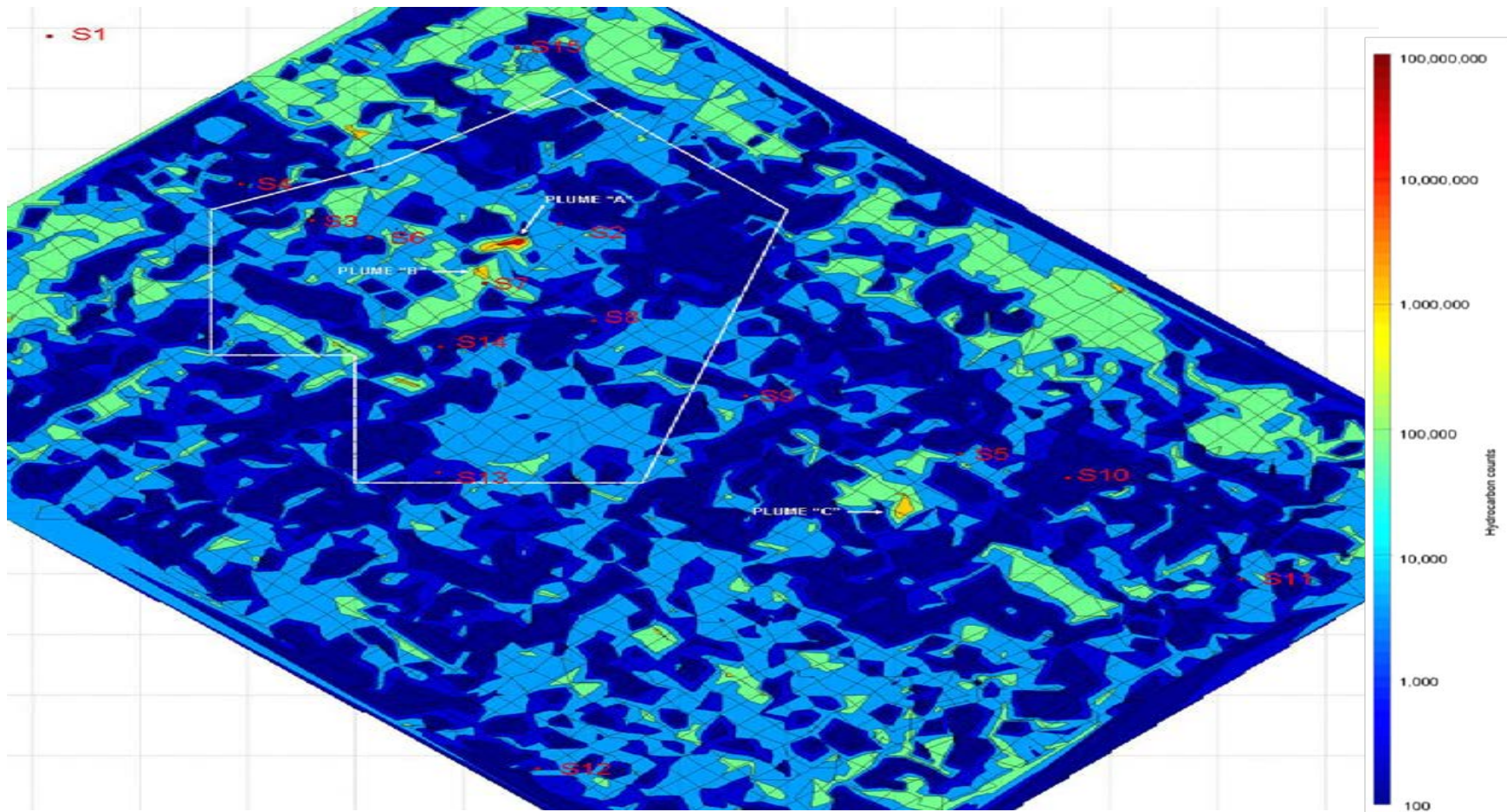
# DETAIL OF WELL BAY BORINGS



DETAILED LOCATION MAP  
 OCS-G-04935  
 BLOCK 20, MISSISSIPPI CANYON AREA

boring area from FMMG Report No. 0201-6235-  
 0, Plate 2a) 12.18.15

# NAVISTRY – SEDIMENT/WATER SAMPLING RESULTS



taken from Waldamar Nelson-Come Monday Report Figure 14) Hydrocarbons intensity is expressed on a log scale to the right

